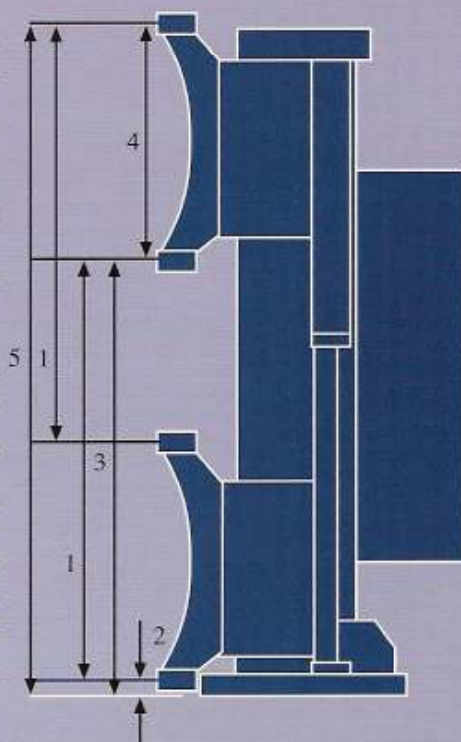


MICRO-VERTEX SPECIFICATION

MICRO-VERTEX MODELS AND SPECIFICATIONS

TECHNICAL DATA	MV 300/600	MV 500/850	MV 750/1100	MV 1000/1350
MOTORISED OPERATION - ALL MODELS				
RESOLUTION	.001mm/.0005"	.001mm/.0005"	.001mm/.0005"	.001mm/.0005"
ACCURACY OF MEASURING SYSTEM IN MICRONS MAX ERROR	(3+L/300)	(3+L/300)	(3+L/200)	(3+L/200)
MEASURING SYSTEM INCREMENTAL SCALE ALL MODELS				
SQUARENESS & STRAIGHTNESS				
MAX ERROR FRONT SIDE	.003mm .006mm	.004mm .008mm	.006mm .010mm	.008mm .012mm
MEASURING FORCE	CONSTANT UNDER MOTOR CONTROL/ADJUSTABLE			
DISPLAY	4 LINES LCD ALPHA/NUMERIC			
PRINTER	INTEGRAL/DOT MATRIX OUTPUT AVAILABLE TO A3/4 MODEL			
PROGRAM STORAGE	INTEGRAL OR VIA REMOTE STORAGE DEVICE			
DUAL PROBE HOLDERS	300mm	350mm	350mm	350mm
AIR PRESSURE	IN BUILT PUMP (VARIABLE)			
POWER SUPPLY	BATTERY POWERED/MAINS ADAPTOR 110 OR 240V			
BATTERY	RE-CHARGEABLE 30 HOURS BETWEEN CHARGES UNDER NORMAL USAGE			



ALL MEASUREMENTS TO COMPLY WITH SPECIFICATION TO BE TAKEN AT 20°C WITH PROBE TIP OF MAXIMUM 55MM FROM HOLDER.

MEASURING RANGE

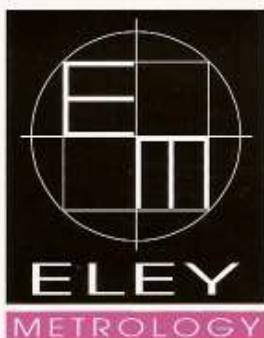
	MV 300/600	MV 500/850	MV 750/110	MV 1000/1350
1	300mm 11.81"	512mm 20.14"	762mm 30.00"	1012mm 39.84"
2	5mm 0.2"	5mm 0.2"	5mm 0.2"	5mm 0.2"
3	305mm 12.00"	517mm 20.34"	767mm 30.2"	1017mm 40.04"
4	300mm 11.81"	350mm 13.78"	350mm 13.78"	350mm 13.78"
5	605mm 23.82"	867mm 34.13"	1057mm 41.61"	1367mm 53.82"

ELEY METROLOGY RESERVE THE RIGHT TO CHANGE THE SPECIFICATION WITHOUT PRIOR NOTICE.

MICRO-VERTEX is supplied with the following:

Instrument with **Rechargeable Batteries** and 100-130v or 200-260v 50-60Hz **Charging Unit** and **Mains Charging Lead Datum Setting Gauge, 10mm Stylus, Dust Cover, Motorised Drive, Integral Printer, Instruction Manual**

Sole distribution by:



Manufactured by:
Eley Metrology Limited
 Beaufort House
 Beaufort Court
 Mansfield Road
 Derby DE21 4FS
 Telephone: **01332 367475**
 Fax: 01332 371435
 email@eyley.com

Calibration
 Laboratory No.
 0333

Approved
 ISO 10360
 BS 6808
 BS 817
 BS 939
 BS 5535
 BS 5204



ACCREDITATION